

Endoscopic Sleeve Gastroplasty

Apollo ESG™ System



**Frustration weighs heavy on the mind.
Discouragement weighs heavy on the heart.**

But, when you find an endoscopic weight loss procedure that empowers you to lose the physical weight and achieve significant, lasting results, those emotional pounds can follow. Are you ready for a new beginning?

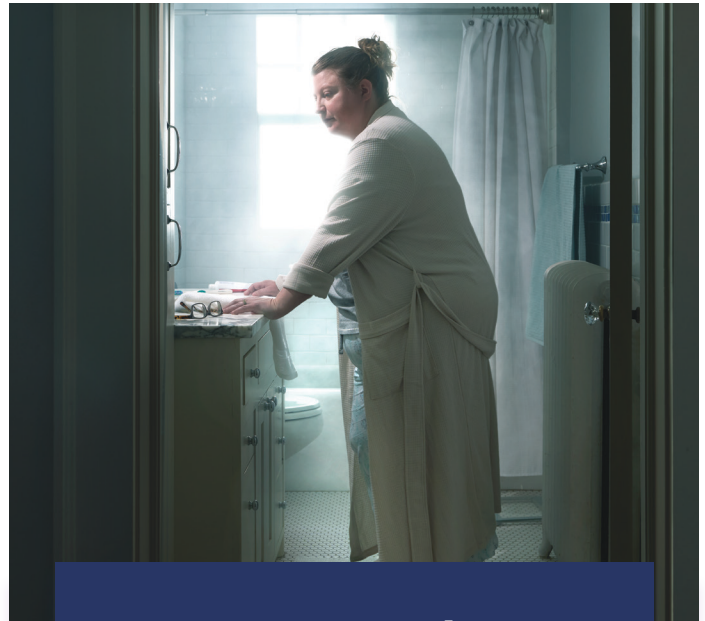
No incisions. No scars.

Endoscopic Sleeve Gastroplasty (ESG) is an advanced endoscopic procedure that requires no incisions. That means no scars. This life-changing procedure may be ideal for those who have not gotten results from drug therapies, dietary advice or exercise changes, and are hesitant to pursue more invasive weight loss options.



See the difference

- 70-80% stomach reduction
- Patients feel full with less food, resulting in weight loss.*¹
- Most patients typically go home the same day as the procedure^{1,2} and can return to routine daily activities in 2-3 days.³



Proven results

A randomized study showed the following results in patients with obesity:

- 49% excess body weight loss 12 months after the procedure (target 25%).¹
- 13.6% average total body weight loss at year 1.¹
- 68% Maintained most of their weight loss 2 years after the procedure.*¹



For additional safety information, please visit www.apolloendosurgery.com/us/en/esg.html or use the QR code.

*For Apollo ESG, you need to follow a healthy diet and exercise program to lose weight. You may not lose weight if you do not adopt healthy habits. Your doctor's clinical team, including dietitians, nutritionists and/or exercise trainers, should help you on your weight loss journey.

What to expect

Your newly smaller stomach will have less space for food. When eating, you should feel fuller quicker, and you'll work to develop better habits. This is your new start to a healthier lifestyle.

- Before the procedure: After meeting with your doctor and nurses, you will be given medication to help you sleep and feel comfortable during the procedure.
- Coming home: Most patients typically go home the same day and return to routine daily activities. Your doctor may prescribe you medications to take after the procedure to manage any discomfort or gastrointestinal symptoms.
- The first four weeks: To help your stomach heal, you will be on a liquid diet for the first week or two, followed by pureed and soft foods for the next two weeks. Typically by week four, you will be able to resume eating solid foods. Follow your doctor's specific instructions.
- After the first month: With less room in your stomach, you should feel full faster and continue to lose weight. The procedure helps you develop better eating habits and change your lifestyle for lasting results.*



For additional safety information, please visit www.apolloendosurgery.com/us/en/esg.html or use the QR code.

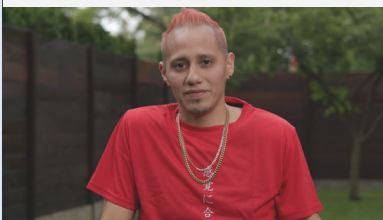
*For Apollo ESG, you need to follow a healthy diet and exercise program to lose weight. You may not lose weight if you do not adopt healthy habits. Your doctor's clinical team, including dietitians, nutritionists and/or exercise trainers, should help you on your weight loss journey.



ESG Success Stories*

| Hear their full stories.

| DJ lost 90 lbs



| Kyra lost 110 lbs



| Taryn lost 52 lbs



*Results are not typical. Results are from individual patient testimonials, and your results may vary.¹

Frequently Asked Questions

► Am I a candidate for this procedure?

ESG performed with the Apollo ESG™ System is indicated for adults with obesity (body mass Index between 30 and 50 kg/m²) who have not been able to lose weight or maintain weight loss through diet and exercise alone. Talk to your doctor about whether you may be a good candidate for this endoscopic procedure.

What device does the doctor use to do the procedure?

The Apollo ESG System is a small endoscopic suturing device, about the size of your finger, that attaches to the end of an endoscope. It is used by a specially trained gastroenterologist or surgeon to sew your stomach into a smaller shape.

Is the procedure permanent?

The sutures are made of a durable, permanent material that does not dissolve. Over time, scarring helps maintain the reduced stomach size and sleeve-like shape. In the event the sutures break or the sleeve stretches, retightening can be performed by your doctor.

What are the most common side effects?

The most common side effects are gastrointestinal symptoms such as nausea, abdominal pain, vomiting, constipation, burping, or diarrhea. These symptoms typically resolve within 30 to 60 days.



For additional safety information, please visit www.apolloendosurgery.com/us/en/esg.html or use the QR code.

References

- ¹ Abu Dayyeh et al. Endoscopic sleeve gastroplasty for treatment of class 1 and 2 obesity (MERIT): a prospective, multicentre, randomised trial. *Lancet*. Vol 400. July 28, 2022. 209 patients were randomized to treatment with ESG combined with lifestyle modifications or to treatment with lifestyle modifications alone. Patients who underwent ESG experienced 13% more total body weight loss than those who pursued lifestyle modifications alone. 60 patients receiving ESG were followed to 104 weeks, and 41 (68%) maintained >25% excess body weight loss, which was the target weight loss goal in the study.
- ² Alqahtani et al. Endoscopic gastroplasty versus laparoscopic sleeve gastrectomy: a noninferiority propensity score-matched comparative study. *Gastro Endosc* 2022.
- ³ Kozan et al. Return to activities of daily living following outpatient endoscopic bariatric therapy. *AJG*. 2021.



This patient testimonial is sponsored by Boston Scientific.

Results from case studies and testimonials are not necessarily predictive of results in other cases. Results in other cases may vary.

About the ESG procedure

Obesity is a multifactorial disease, and this testimonial applies to this specific patient. Consult with your doctor.

Patients who have an ESG must abide by aftercare program requirements and lifestyle modifications (such as changes to diet and exercise) to achieve desired results.

Individual results of the ESG procedure will vary.

There are risks associated with all medical procedures. Please talk with your doctor about the risks and benefits associated with the ESG procedure.

About the Apollo ESG™ and ESG™ Sx Systems

- Apollo ESG™ devices are made to help you lose weight by reducing the size of your stomach and increasing the time it takes for food to pass through your stomach.
- For Apollo ESG™ you need to follow a healthy diet and exercise program to lose weight. You may not lose weight if you do not adopt healthy habits. Your doctor's clinical team, including dietitians, nutritionists and/or exercise trainers, should help you on your weight loss journey.
- Apollo ESG™ System is for adults with obesity (BMI 30-50kg/m²) who have not been able to lose weight and keep it off through more conservative measures (e.g., diet and exercise).
- Your doctor will ask you about your medical history and will also perform a physical examination to determine your eligibility for the Apollo ESG™ device. Additionally, at the time of your procedure, the doctor may identify internal factors, such as stomach ulcers or erosive gastritis, which may prevent you from receiving the device.
- You must not receive Apollo ESG™ if you are pregnant.
- You must not receive Apollo ESG™ if you have an eating disorder (anorexia nervosa, binge eating disorder, etc.).
- All procedures have risk. Patients should talk to their doctor and understand all risks before having a procedure.
- Nausea and vomiting, abdominal pain, constipation, eructation, constipation, heartburn and diarrhea are common after the ESG. Gastrointestinal bleeding may also be experienced following these procedures. More serious complications have been reported, though these are relatively rare.
- While many patients are discharged from hospital on the day of their procedure, some patients may stay in hospital or return to hospital for assistance with symptoms associated with acclimating to the sleeve. Symptoms are most often treated with IV fluids or medication, but medical intervention may be required.
- Call your doctor if you have any concerns about your health or well-being following an ESG.
- Some patients may not lose weight following a procedure with Apollo ESG™. Others may lose weight and then report that they no longer feel full after a meal, like they did when they first had their procedure. In such cases, the sleeve may have been compromised. Talk to your doctor about your options. You may be a candidate to have the sleeve restored or to have another type of weight loss procedure.
- If you have additional questions, talk with your doctor. For full safety information, visit apolloendo.com/dfus.

CAUTION: The law restricts these devices to sale by or on the order of a physician.

Indications, contraindications, warnings, and instructions for use can be found at apolloendo.com/dfus.

The content of this brochure is for information purposes only and is not meant for medical diagnosis. This information does not constitute medical or legal advice, and Boston Scientific makes no representation regarding the medical benefits included in this information. Boston Scientific strongly recommends that you consult with your physicians on all matters pertaining to your health or to address any questions.

All trademarks are the property of their respective owners. All images owned by Boston Scientific.

©2024 Boston Scientific Corporation or its affiliates. All rights reserved.

Boston Scientific Corporation
300 Boston Scientific Way
Marlborough, MA 01752 USA
US Customer Service +1-888-272-1001

ENDO-1904802-AA